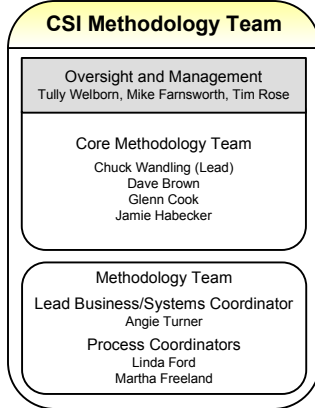


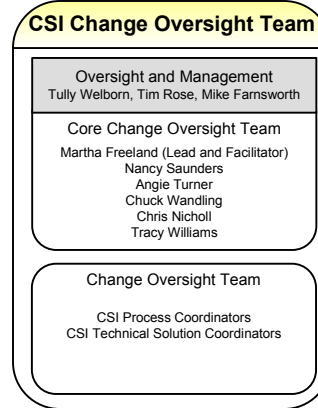


Utilizing Business Resources, Contractor Resources, and CSI Solution Resources, functional teams to support CSI Detailed Design Forum activities will be formed as necessary.

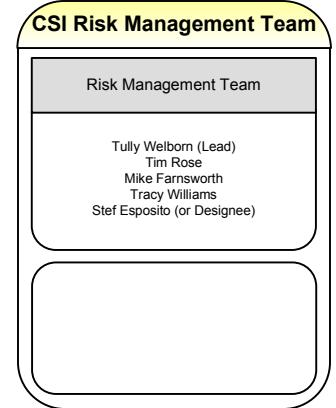
CSI Phase 3
Functional Team Structure
Detailed Design Forum
May 19, 2009



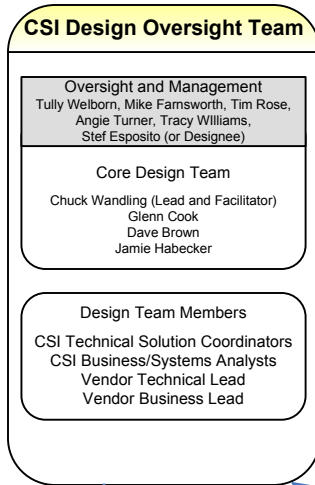
The CSI Methodology Team is responsible for identifying, defining, documenting and evaluating the tasks and processes necessary to accomplish BPR, Detailed Design Forum, and Development and Implementation activities in a clear, consistent and manageable effort.



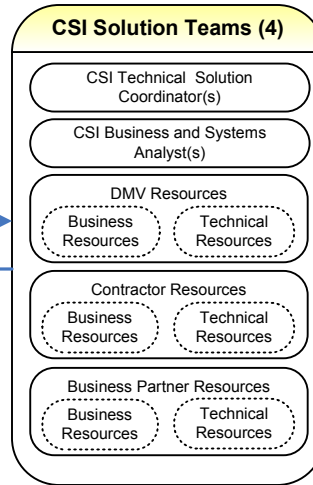
The CSI Change Oversight Team (COT) is responsible for identifying, documenting, coordinating, and continually evaluating events from multiple entry points that could result in change within the CSI solution and associated models.



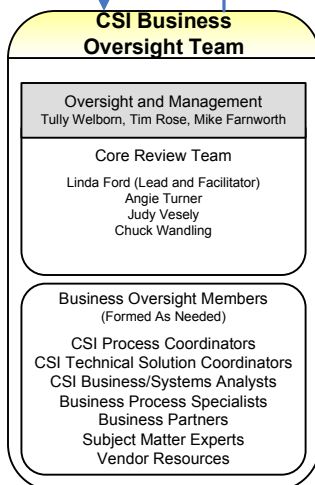
The CSI Risk Management Team (RMT) is responsible for informed, proactive, and timely management of project risks.



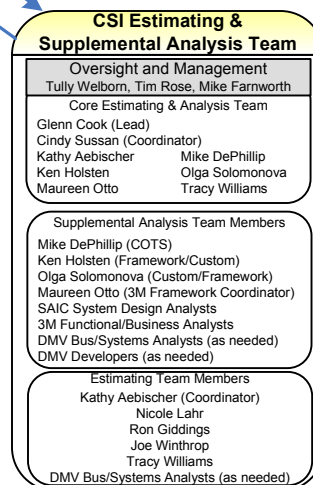
The CSI Design Oversight Team (DOT) is responsible for creating a unified detailed design derived from the business processes also ensuring design and model integrity and coherence. This team also creates and coordinates the distribution of solution team units of work (STP - Solution Team Packages).



CSI Solution Teams are responsible for performing detailed design activities resulting in a detailed solution design.



The CSI Business Oversight Team (BOT) is responsible for reviewing design artifacts (software use cases and robustness diagrams) to ensure that the designs developed by the Solution Teams are logically consistent and adhere to the business needs and requirements.



The Estimating and Supplemental Analysis Team (ESAT) is responsible for providing supplemental analysis and details in the areas of custom build, 3M Framework, and COTS alternatives to support detailed solution design. In addition, this team is responsible for developing realistic and comprehensive basis of estimates that can be used to determine costs for implementing the CSI solution.

Present Approve Assign Result